



www.gradient.fi

Gradient

HELSINKI 1.5

OWNER'S MANUAL

GRADIENT HELSINKI 1.5

Thank you for choosing a unique, limited edition pair of Gradient Helsinki loudspeakers.

This product is a state-of-the-art loudspeaker, handcrafted and individually tested in Finland using the best possible materials available. Gradient loudspeakers are built to last and when used with care, they will provide you with very high quality musical experiences for years to come.

Gradient Helsinki is a versatile loudspeaker and has very natural and dynamic sound reproduction virtually in all kinds of listening rooms and placements. However, there are certain simple principles for placing these loudspeakers right. They are presented in this booklet and will help you to get most out of your new Gradient Helsinki.

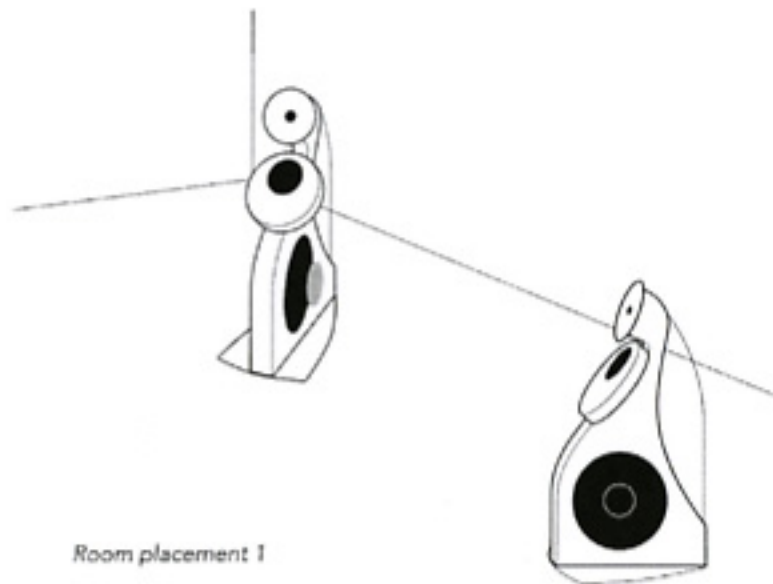
PLACEMENT IN A ROOM

As a rule of thumb, Gradient Helsinki sounds the best in a position where it also looks the best. So start from that.

Place loudspeakers around 45 degrees sideways towards to backwall. In this placement magnet side of the woofers should point towards the backwall, i.e. inwards

(Room placement 1.)

Tilting has a noticeable effect on bass reproduction. The more you toe-in, the stronger bass you will get. Also the further away from the wall you use them, more sideways towards the wall they can be positioned.

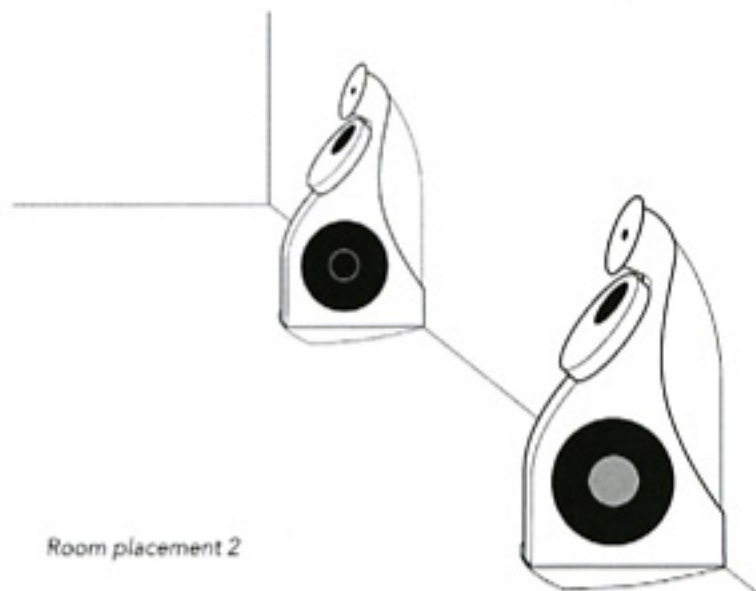


Room placement 1

PLACEMENT IN A ROOM

In a small listening room or with rather wide backwall, you can also experiment with very different placement than previously described.

By positioning Gradient Helsinki's backglass straight against the backwall you'll get very open and dynamic soundstage without much of a space for loudspeaker placement. In this position woofers should face magnets outwards. However, avoid direct corner positioning, where speakers are less than 1m from sidewalls *(Room placement 2.)*



Room placement 2

CONNECTING TO THE AMPLIFIER

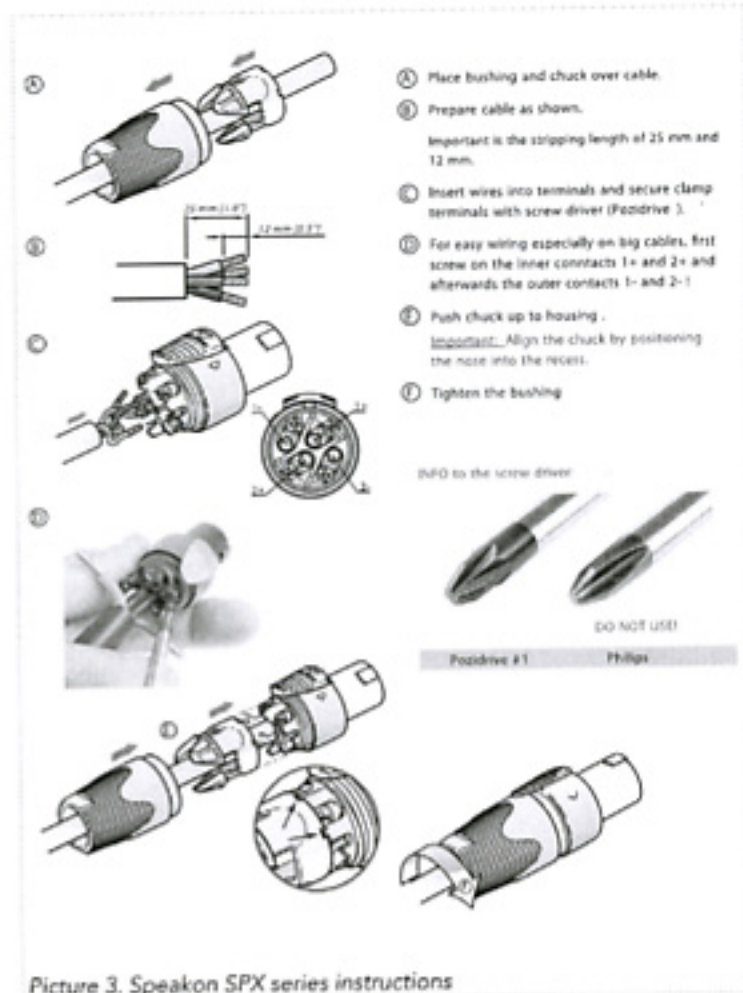
For fast, easy and very high quality connecting, Gradient Helsinki is equipped with a professional four-pole Speakon connector and cable housing. Speakon is very durable and easy to connect and lasts hundreds of plug-in and plug-out connections.

If you are not using dedicated **Gradient cables**, follow simple instructions below to prepare your cables with Speakon connectors to work with Gradient Helsinki. (Picture 3. Speakon SPX series instructions)

For conventional, single-/monoblock amplifier use, connect plus cable to the both +1 and +2 poles and minus cable in the similar way to -1 and -2 poles. If cable used is very thin, bridge made of short part of the cable may be necessary to connect +1 and +2 poles together.

For bi-amping, connect amplifier driving woofers to the poles +1 and -1, and a primary amplifier driving midrange & trebles to poles +2 and -2.

CONNECTING TO THE AMPLIFIER



RECOMMENDED EQUIPMENT

A good quality solid state amplifier, able to give minimum 25W into 8 ohms load per channel, is a good choice for Gradient Helsinki and will satisfy most of the music listeners.

Most modern and vintage tube amplifiers will also work well with Gradient Helsinki. Though some of them have high source impedance at lowest frequencies and thus reproduction of bass is quite round and not as tight as it could be. But this is also worth of experimenting and heavily depends on a listening room and personal taste of a listener.

We at Gradient are proud that you have chosen our unique product and want to wish you enjoyable and relaxing listening moments with Gradient Helsinki for years to come.

For more information about Gradient products, please visit
www.gradient.fi

GRADIENT LTD
LEVYSEPÄNKATU 28
04440 JÄRVENPÄÄ
FINLAND
www.gradient.fi

Gradient
© 2008 Gradient Ltd, all permissions withheld